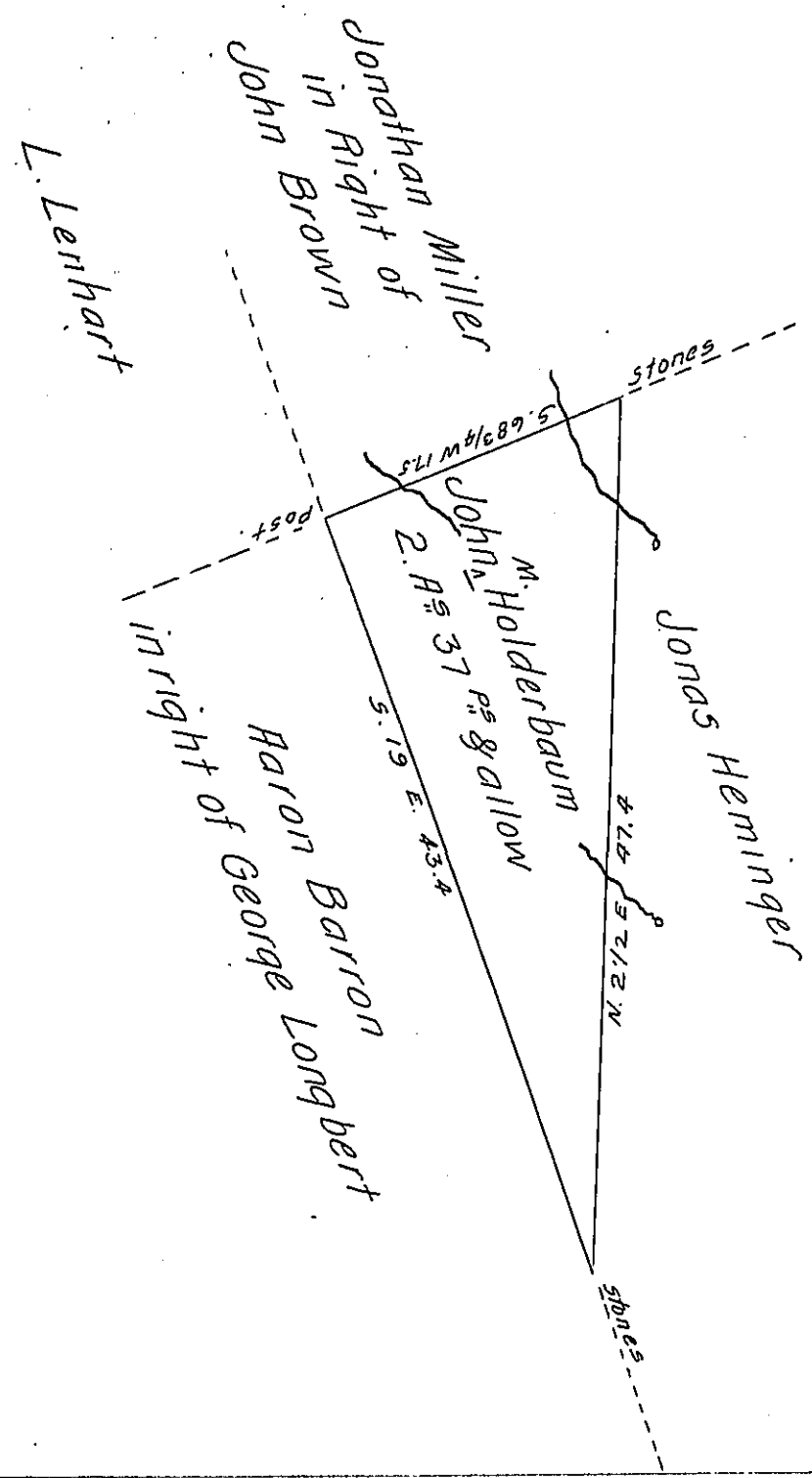


FORM NO. 1.



Situate in Jefferson Township Somerset County, surveyed June 4<sup>th</sup> 1856 by A. J. Colborn Esq. is now calculated draughted & returned. In pursuance of a warrant dated the 9<sup>th</sup> day of October A. D. 1848.

To John Rowe Esq. } pr. Josiah P. Walker C.S.  
 Surveyor General }

IN TESTIMONY that the above is a copy of the original remaining on file in the Department of Internal Affairs of Pennsylvania, made conformably to an Act of Assembly approved the 16th day of February 1833, I have hereunto set my hand and caused the Seal of said Department to be affixed at Harrisburg, this fifth day of February 1908.

*Henry Horvath*  
 Secretary of Internal Affairs.